



GREAT EXPEDITIONS

DISCOVER THE WILDLIFE, LANDSCAPES AND HISTORY
OF ANTARCTICA AND THE ARCTIC



“Viking Expeditions is essentially about blending challenging outdoor exploration with extreme comfort.”

– Kate Armstrong, Freelance Travel Writer



Perfecting expedition voyages

As a Viking explorer, you've probably visited countless countries, engaged with dozens of fascinating cultures, and taken home more treasured memories than you ever thought possible.

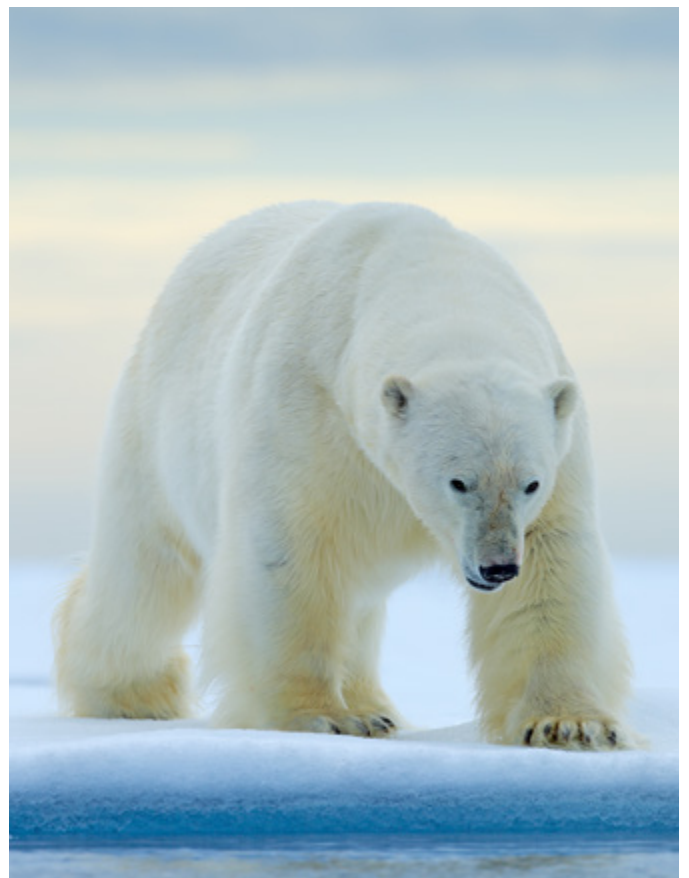
But as every modern explorer knows – no matter how many magnificent places you visit, there is always another one out there, just waiting to be seen.

Viking Expeditions opens up the possibilities of where that next destination might be, putting some of the planet's most wondrous, once-out-of-reach places firmly in your grasp.

With our Antarctic voyages designed for adults over 18 and all fitness levels, suddenly, the possibility of seeing Antarctica with your own eyes can become a reality. If you've visited six continents already, you can finally set foot on the last continent and return home knowing you've walked in the icy footsteps of the great explorers.

Or you can experience the stark beauty of the Arctic, a landscape that appears untouched by time. To visit this region is to embark on a personal journey of discovery and connection. It is a place where time seems suspended, where the raw power of nature stirs the depths of your soul.

In this e-book, you will find pages brimming with inspiration to ignite your explorer spirit. Join us on a Viking Expedition, an experience sure to transform you.



Contents

Wildlife.....	6
Animals of Antarctica	8
Animals of the Arctic.....	18
Landscapes	26
Landscapes of Antarctica	28
Landscapes of the Arctic	46
History.....	38
History of Antarctica	40
History of the Arctic.....	44
Our Voyages.....	50
The Viking Difference.....	52
Our State-of-the-Art Vessels.....	56
Science & Enrichment At Sea	58
Expedition Itineraries.....	60

Clockwise from top left: Chinstrap penguins; Explorers' Lounge; Polar bear; Roald Amundsen



Fur seal pup



Wildlife

At Viking, we are passionate about delivering unforgettable encounters with wildlife in their natural habitats. Our commitment to creating immersive polar experiences led us to design innovative ships perfectly suited for these remarkable journeys.

Embarking on the state-of-the-art *Viking Octantis* and *Viking Polaris* is an unparalleled opportunity to witness wildlife. These remarkable ships redefine the concept of viewing platforms, as every room becomes an observation room, boasting floor-to-ceiling windows inspired by Norway's bird hides. Whether indoors or outdoors, guests are immersed in breathtaking panoramas, ensuring you never miss a moment of the most extraordinary wildlife encounters.

On an expedition, as guests of nature, we follow its lead. We let the wildlife and the things we observe, like humpback whales at play, set our flexible agenda. We strive to capture incredible moments as they occur, resulting in a unique experience every time we set sail.

Prepare to be captivated by Antarctica and the Arctic's majestic creatures against the backdrop of Earth's most awe-inspiring sceneries.



Humpback whale

A wide-angle photograph of an Antarctic scene. In the foreground, a large, jagged iceberg floats in dark blue water. The background features a vast, flat expanse of snow and ice leading up to a range of rugged, snow-covered mountains under a pale sky. The overall color palette is dominated by blues, whites, and greys.

Animals of Antarctica

Despite being one of the coldest, driest and darkest places on Earth, Antarctica is anything but dormant. In this isolated, otherworldly destination where the only resident humans are scientists, diverse wildlife thrives amid the extreme conditions. The White Continent offers animal encounters unlike any other destination, with the likes of gentoo penguins, leopard seals, orcas and albatross regularly gracing expedition guests with their presence. Expect to witness penguins sliding on the ice and fur seals lazing in the sun. See migratory birds circling overhead, humpback whales breaching in the waves or orca pods striking coordinated attacks on their prey. The things you see in this wild, remote corner of the globe will live with you long after you return home.

Penguins

Whether it's playing a starring role in a nature documentary or a blockbuster animation, few are impervious to the charms of a waddling penguin. The opportunity to encounter this beloved flightless bird draws many an expedition cruiser to Antarctica and sightings, virtually guaranteed on every voyage, never fail to awe and entertain. Seven species inhabit Antarctica's icy waters.

Adélie Penguins

At around 70cm tall, adélie penguins are one of the smaller penguin species, but what they lack in height they make up for in boisterousness. It's likely you'll hear a colony of adélies before you see it, but when you do you can be sure by the white ring surrounding the penguins' eyes.

Chinstrap Penguins

Chinstrap penguins inhabit the outer islands of the Antarctic Peninsula, where the water is slightly warmer. The sub-Antarctic islands are the summer home of tens of thousands of noisy chinstrap penguins that can be particularly territorial during the breeding season.

Gentoo Penguins

As the third-largest penguin species, gentoo penguins are also one of the most well recognised, with a bright red-orange bill and feet and white blazes above the eyes. Unlike smaller penguin species, gentoo penguins have relatively relaxed natures, and stay with their mate all year round.

Emperor Penguins

The iconic and mighty emperor penguin is the largest of all 18 penguin species on earth, weighing up to 40kg. Utterly unlike other penguins, they are not territorial and rather can be seen huddling in large groups to keep warm. Emperor penguins are the only animals that breed during the Antarctic winter, and can endure temperatures as low as -80° Celsius – the coldest conditions on earth.

Macaroni Penguins

Inhabiting the warmer waters of Antarctica's surrounding islands, macaroni penguins possess a flamboyant yellow plumage above each eye. Macaronis are skilled swimmers, swimming up to 10,000 kilometres per year.

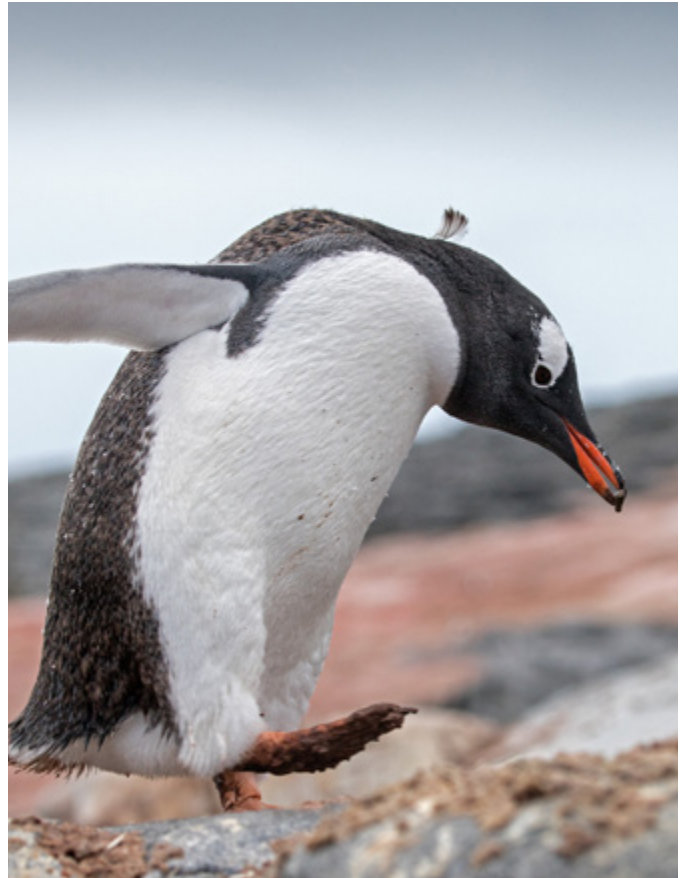
King Penguins

An iconic sub-Antarctic sighting, the beautiful king penguin's striking orange markings make it the most brightly coloured penguin species. It can stand up to 100cm tall, and rather than rely on a nest, will carry its egg around on its feet for up to 60 days during the mating season.

Southern Rockhopper Penguins

The petite southern rockhopper penguin is easy to spot with red eyes and a spiky yellow and black plume on the head. Like the star of *Happy Feet*, Lovelace, this entertaining penguin doesn't toboggan or belly-slide like other penguins, but rather gets about by hopping and jumping.

Clockwise from top left:
Adélie penguins; Gentoo penguin; Southern Rockhopper penguin; Emperor penguins



Seals

Don't be surprised if the seals you see on your Antarctic expedition appear unfazed by your presence. Unlike Arctic seals, who share their environment with deadly polar bears, Antarctic seals have few natural predators. These beautiful animals show little fear of humans as a result, making for memorable close encounters and incredible photo opportunities. During breeding season, spot these long-whiskered mammals on the pack ice surrounding Antarctica and in the outlying islands, where up to a million can gather at a time. The six species that inhabit Antarctica make up the vast majority of Earth's seal population.



Leopard Seals

Like its land-dwelling namesake, the leopard seal is one of Antarctica's fiercest predators, with spotted, slim bodies designed for speed and razor-sharp teeth for catching squid, penguins and even other seals.



Southern Elephant Seals

At up to 4,000 kilograms and 4.5 metres long, southern elephant seals are the largest seals on earth. Expect a cacophony of roaring from their overflowing beach colonies after molting season when the next generation of males compete to be the next to inherit a harem of females.



Crabeater Seals

As the most abundant large mammal on earth after humans and domestic animals, you will almost certainly encounter crabeater seals in the pack-ice zone surrounding Antarctica. Dog-like heads with long snouts and blonde or dark brown fur characterise this ubiquitous seal.



Weddell Seals

The weddell seal is the only seal species that may be found on shores as well as on free-floating pack ice. Commonly sighted on expeditions, weddell seals are beloved for their undeniably adorable appearance: mottled grey coats, cat-like noses and whiskers and an upturned, smiling mouth that melts the heart.



Antarctic Fur Seals

One of the smallest seals in Antarctica, antarctic fur seals are loosely related to dogs and sea lions with long whiskers, sharp teeth and a thick fur coat. Unlike elephant seals, breeding males fight over territory and then mate with the females that choose his territory – sometimes over 100 in one season.



Ross Seals

The smallest, least abundant and least well known of Antarctic seals almost never leaves the Antarctic Ocean. This unique seal has the shortest fur of any seal and is easily spotted thanks to its disproportionately large eyes, which are up to seven centimetres in diameter.

Whales

If there is one place in the world you're guaranteed to encounter some of the world's most well-known and revered whales, it's Antarctica. Seven magnificent species inhabit the waters there, including almost 75 per cent of the world's killer whale population and abundant pods of breaching humpbacks. Witnessing these mysterious and highly intelligent creatures is an experience certain to be a highlight on your Antarctic expedition.

Humpback Whale

The captivating humpback whale can grow up to 15 metres long and is easily recognised by its acrobatic breaching and tail-slapping. Its knobby head, pectoral fins, barnacled skin and distinctive white tail markings further distinguish this commonly sighted and much loved whale.

Sei Whale

As solitary animals, sei whales are one of the most elusive whale species, and while they can be spotted near the surface, are generally a rare sight on an Antarctica cruise. Sei whales are one of the only whales with a dorsal fin and are the fastest whales on earth, reaching speeds of over 50 kilometres per hour.

Minke Whale

At the other end of the spectrum, Minke whales are the second smallest whales species in the world with a streamline, barnacle-free body and pointy snout. Their inquisitive nature calls them to frequently swim beside boats, making them delightful whales to encounter on an Antarctic expedition.

Killer Whale / Orca

Known as "the wolves of the sea" because of their toothed jaws and pack hunting behaviour, few cruise experiences can top witnessing a pod of these cunning, playful and intelligent whales stalking their prey. Their black and white and prominent dorsal fin appearance makes them one of the most recognisable animals on the planet.

Fin Whale

Not far behind Sei whales in speed are streamlined fin whales that can cover 150 kilometres in one day during their winter migration. Fin whales are more social than most other whale species and work together to round up krill in pods of up to seven whales. At up to 26 metres long, they are the world's second largest animals.

Sperm Whale

Sperm whales are the largest toothed predators on earth, and frequently dive up to 1,200 metres – deeper than any other Antarctic whale – to hunt their staple prey, the Giant Squid. You can spot a sperm whale by its distinctive blow that projects up to five meters. Only male sperm whales are found in Antarctica.

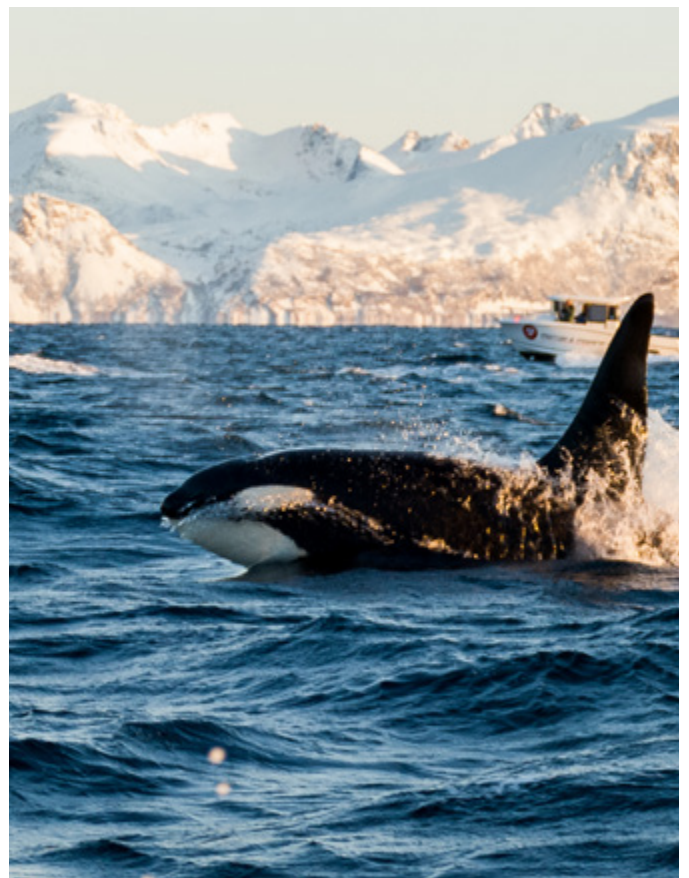
Blue Whale

Blue whales are the largest animals the world has ever seen, growing up to an unfathomable 30 metres long and weighing up to 200 tonnes. Their powerful call also makes them the loudest animal on Earth, and while still endangered, sightings of this colossal creature in Antarctica are not as rare as they once were. While actually grey, underwater they appear to glow blue.

Southern Right Whale

You'll know you're sighting a southern right whale by its distinctive V-shaped blow, it's lack of a dorsal fin, and its enormous head that is a quarter of its body length and covered in large callosities. As lovers of shallow water, they have been known to swim as far in as the surf and frequently make a spectacle for whale watchers by breaching and tail lobbing.

Clockwise from top left: Humpback whale; Southern right whale; Killer whale; Sperm whale





Other Birds

Every year, millions of Antarctic seabirds gather in extraordinary numbers to breed along the peninsula and outlying islands, creating magnificent viewing and photo opportunities. There are 35 species of birds to discover in Antarctica, but the majestic wandering albatross, which boasts the largest wingspan in the world, is one of the most eagerly anticipated. The blue eyed Antarctic shag is another favourite among Antarctic cruisers, with its distinctive cobalt skin haloing the eye and yellow caruncle at the base of the beak. Other birds to behold in this icy corner of the globe include Antarctic terns, Antarctic skuas, snowy sheathbills, snow petrels, giant petrels, cape petrels, storm petrels and snowy sheathbills.



Left: Blue-eyed Antarctic shag

Right from top: Snowy sheathbills; Antarctic tern



Polar bears

A polar bear is partially visible on the left side of the frame, resting on a snow-covered ice floe. The background consists of a vast, blue sky with soft, wispy clouds. The overall scene is serene and captures the essence of the Arctic environment.

Animals of the Arctic

The wildlife of the Arctic region is a testament to the resilience and adaptability of nature, embodying a delicate balance between survival and harmony in one of the harshest environments on Earth. Polar bears, the iconic symbol of the Arctic, are perfectly adapted to survive the harsh conditions. These magnificent creatures evoke both a sense of power and vulnerability. Within the waters, majestic whales command attention with their graceful presence. The wetlands and shores serve as vital breeding grounds for a multitude of bird species, making them havens for ornithologists and bird enthusiasts. Each creature that inhabits this region has its own story to tell, weaving a rich tapestry of life and adaptation in one of the planet's most extreme environments.



Polar Bears

Polar bears are renowned inhabitants of the Arctic, recognised for their snowy coats and formidable nature. These magnificent creatures are the largest predators on land and have successfully evolved to thrive in the harsh Arctic environment. They rely on sea ice for hunting seals, their primary food source. As a vulnerable species, protecting the polar bear is crucial to maintaining the delicate balance of the Arctic ecosystem. Preserving its habitat and ensuring its well-being is essential for safeguarding the future of this magnificent apex predator.



Arctic Fox

Camouflaged against the snow, the Arctic fox is a marvel of adaptation, their thick fur coat and fluffy tail keeps them warm. This small predator has keen senses and nimble agility, allowing it to hunt small rodents and scavenge for food. It endures extreme cold by digging intricate dens in the snow. The Arctic fox's resilience and resourcefulness make it a true survivor in the Arctic environment, embodying the spirit of the North's wild beauty.



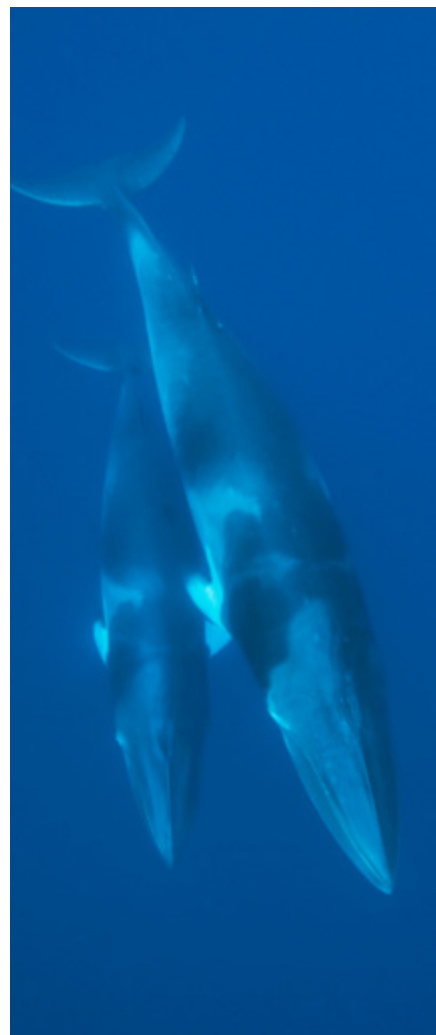
Arctic Hare

The Arctic hare, with its dense white fur, provides camouflage against the snow, keeping it well hidden from predators. With powerful hind legs, it bounds across the snowy landscapes with a remarkable speed of up to 60km an hour. The Arctic hare has evolved to withstand the extreme cold, relying on its ability to dig burrows in the snow for shelter. A true symbol of resilience, the Arctic hare thrives amidst icy horizons, embodying the tenacity and beauty of the Arctic wilderness.



Musk Oxen

The musk oxen roam the vast tundra in tightly knit herds. Their shaggy coats, consisting of long guard hairs and a warm underlayer, protect them from freezing temperatures. These sturdy herbivores use their powerful horns to defend against predators. During harsh winters, they form a defensive circle, with adults facing outward to shield the vulnerable young from threats. With their stoic presence and ancient lineage, musk oxen symbolise endurance and unity in the face of adversity, embodying the spirit of survival in the Arctic's unforgiving landscapes.



Whales

In this pristine and remote environment, 17 whale species thrive, captivating both scientists and nature enthusiasts alike. From the awe-inspiring beluga and bowhead whales to the acrobatic humpback whale with its mesmerizing displays, the Arctic is home to a remarkable cast of marine giants. Within this fragile ecosystem, where ice and sea intertwine, each whale species has carved its niche, adapting to the challenges of the Arctic environment. They face shifting sea ice, extreme temperatures, and limited food sources, yet their resilience shines through.

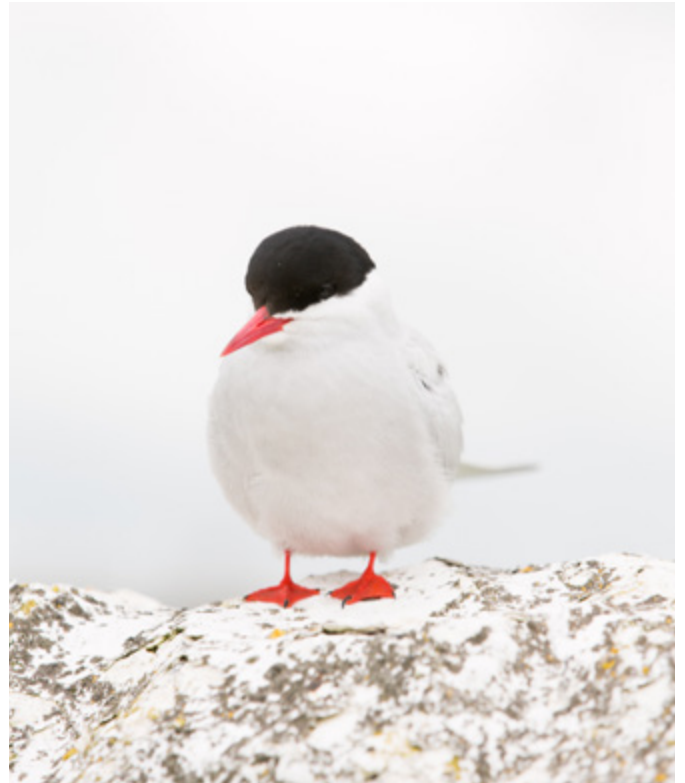
Birds

The Arctic is a haven for a remarkable array of bird species that have adapted to thrive in this extreme and awe-inspiring environment. These resilient birds navigate the icy waters, rugged coastlines, and vast tundra, bringing life and colour to this remote wilderness. They endure harsh temperatures and contend with limited resources, showcasing their remarkable adaptations and migratory prowess.



Snowy Owl

The snowy owl, a magnificent Arctic resident, commands attention with its striking appearance. Clad in pristine white plumage, and adorned with intense yellow eyes, this regal predator is a symbol of the frozen tundra. With a wingspan of up to 2 meters, the snowy owl soars gracefully across vast Arctic landscapes, its silent flight concealing its stealthy hunting techniques.



Arctic Tern

The Arctic tern, a true globetrotter of the avian world, embarks on an extraordinary journey spanning many continents. From the Arctic's icy breeding grounds to the Antarctic's frigid shores, this small, elegant bird defies distance. With delicate features and a red beak, the Arctic tern's remarkable migration showcases its unwavering determination and ability to adapt, making it an exceptional ambassador of the Arctic.



Puffin

The puffin, a beloved Arctic seabird, captures hearts with its distinctive appearance and charming antics. With a colourful, oversized beak and black and white plumage, it stands out against rugged coastal cliffs. Skilled divers, puffins plunge into icy waters in search of fish, their quirky demeanour adding a touch of joy to the Arctic realm. A true symbol of coastal beauty and resilience.



Ivory Gull

The ivory gull, a captivating Arctic bird, graces the polar regions with its pristine white plumage. Adapted to the harshest of conditions, it forages near icy edges, defying the cold. With its agile flight and keen survival skills, this elegant bird embodies resilience. Its presence in the Arctic serves as a reminder of nature's remarkable ability to thrive in even the most extreme environments.



Gyrfalcon

The Gyrfalcon, a majestic predator of the Arctic skies, commands attention with its powerful presence. With white or grey plumage and fierce hunting prowess, it is the largest falcon in the world. Agile and swift, the Gyrfalcon soars through the frozen landscapes, its sharp vision and incredible speed enabling it to capture prey in mid-air.







Antarctica iceberg



Landscapes

On a Viking expedition, we give you more ways to explore more often. Whether you are captivated by the awe-inspiring landscapes depicted in cinematic travel documentaries or enchanted by the fascinating tales of nature, Viking is dedicated to delivering an exceptional experience.

Encounter vast icy plains that stretch endlessly, with blue-tinged glaciers and towering mountains. Icebergs drift quietly, their crystalline forms glistening in the sun, dominate the serene polar waters. Enchanting bays, carved by ancient forces, invite exploration and unveil secrets frozen in time. Across the Arctic tundra, delicate flora emerges from the frozen earth, showcasing nature's resilience. These polar realms stand as testaments to the raw power and fragile harmony that exist within Earth's most extreme and mesmerising corners.

Zodiac excursions and shore landings give you unparalleled opportunities to view and photograph landscapes, while optional excursions such as submarine rides give a different perspective of your destination. Participating in ongoing scientific research with our Viking scientists will get you closer to your destination and provide a deeper understanding of your environment.





Antarctica

It might be the prospect of spotting unique and elusive wildlife that draws many an expedition cruiser to Antarctica, but more often than not, it is the landscapes that steal their heart. A vast, white wilderness whose ethereal beauty is hard to fathom, Antarctica is one of the few places on Earth that truly puts into perspective the expansiveness of the planet, and the almost microscopic presence of us mere mortals. The treeless panoramas of snow, ice, water and rock in this southernmost desert are unlike any other, with few plants able to survive Antarctica's harsh conditions – the coldest on earth.

Just two seasons exist in Antarctica – summer and winter – and Viking's Antarctic expeditions are in full swing during the warmer months of October to March. During the Antarctic summer, the sun is almost always in the sky and, in the peak of summer, hardly sets at all. While the Midnight Sun is observed in several towns in the northern hemisphere you need to venture to Antarctica to see it in the southern hemisphere. During the magical summer period, the sea ice retreats, the land is brimming with abundant animal life and the temperatures on the Peninsula can even reach a balmy 10° Celsius near the coast.

Left: Zodiac excursion

Top: Antarctica's rocky and icy coastline



October and November

With the Antarctic Peninsula awakening from its winter hibernation, daytime temperatures grow to -7° to 2° Celsius and pristine snowscapes are the stars of the show. Expect to see an abundance of landscape sculptures in the form of ice floes and icebergs, perfectly preserved from the previous winter. Soft snow dusted on the ground creates ideal camping conditions for optional shore excursions, and wildflowers can be seen blooming across the verdant hills of the Falkland Islands.

December and January

During Antarctica's mid-summer, days can seemingly go on forever in a brilliant blur of blue skies and glowing ice shelves. 20-hour days are the standard at this time, with visitors during the height of summer being blessed with those incredible 24-hour days. Temperatures are also at their highest in January, so glaciers calve more often and there is less snow on the shores and rocky cliffs.



February and March

In late summer, the season begins to wind down and snow cover is at its lowest, but this happens to be the best time for some truly spectacular sunrises and out-of-this-world sunsets. You might also see more colours of the rainbow than usual thanks to bright pink and green snow algae thriving on the sunshine under the surface of the water. Because some of the land ice has melted during summer, this period is the best time to visit if you're a keen explorer wanting to feast your eyes on as much of the Antarctic landscape as possible. Late summer is also when whale watching opportunities are at their best.

Left to right: Rocky cliffs exposed; Midnight sunset on icebergs





The Arctic

Experience the stark beauty of the polar North. With over half the land covered by glaciers and sea ice extending from the North Pole to the surrounding continents, the Arctic may appear too harsh for life to exist. Yet within this remote ice-sculpted landscape lies a thriving ecosystem, fuelled by months of a never-setting sun.

The landscape of the Arctic Northwest Passage is a stunning testament to nature's grandeur. Vast expanses of icy waters and rugged coastlines define this remote and captivating region. The ever-changing Arctic landscape holds an undeniable allure, enchanting explorers and adventurers who dare to traverse its breathtaking terrain.

Left: Houses in Nuuk, Greenland

Top: Iceberg in Disko Bay, Ilulissat, Greenland



Summer

The Arctic summer typically encompasses the months of June, July, and August. It is characterised by relatively milder temperatures compared to winter, ranging from just above freezing to around 10° Celsius. During this season, the Arctic experiences the midnight sun phenomenon, where the sun remains visible above the horizon for 24 hours a day in some regions. The summer brings a burst of activity, with melting ice, the proliferation of wildlife, and the return of migratory birds. It is a time of growth, as plants bloom, and the Arctic ecosystem thrives.



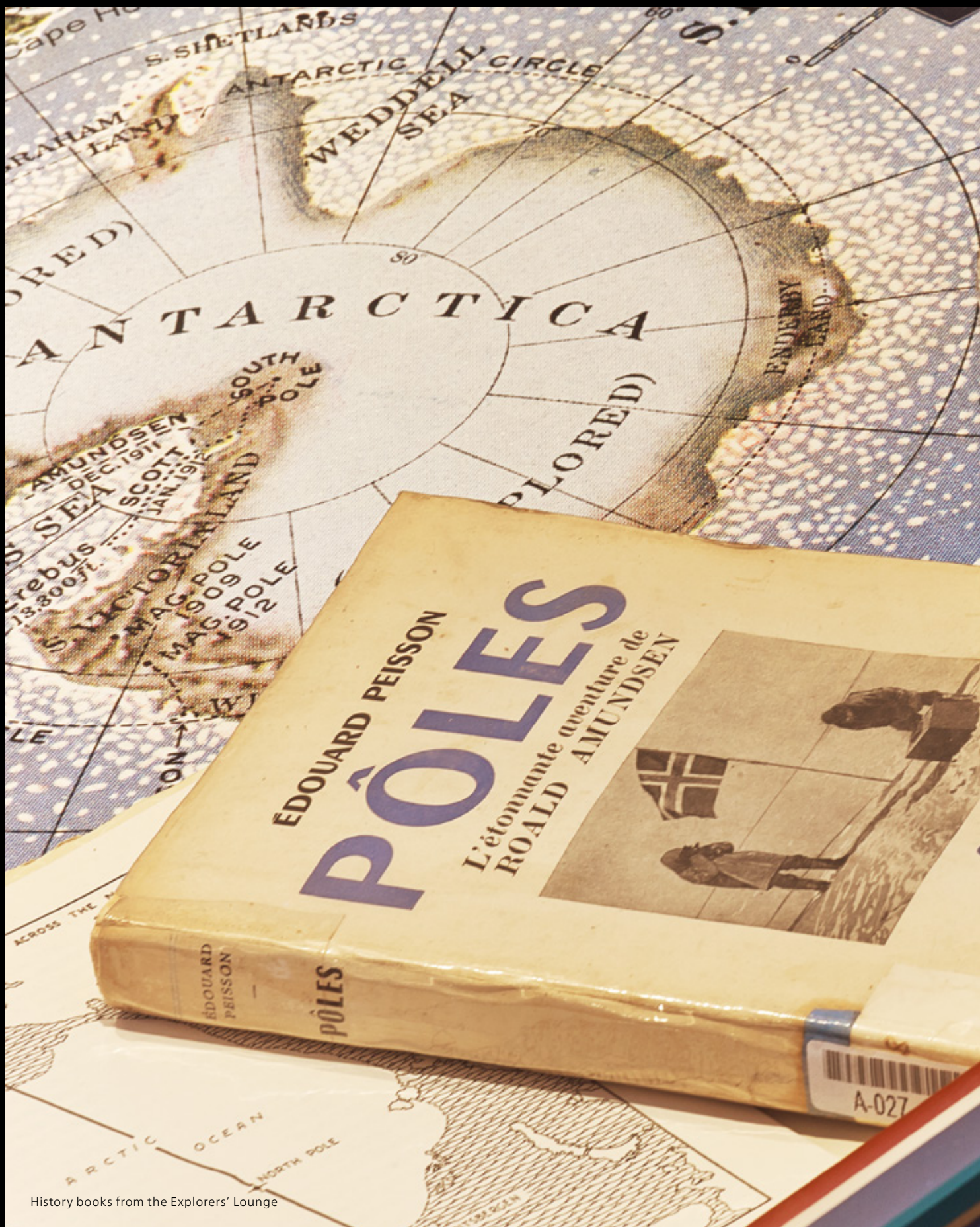
Winter

The Arctic winter typically spans the months of December, January, and February. It is known for its cold temperatures, which can plummet to -50° Celsius or even lower in some areas. One of the distinctive features of the Arctic winter is the polar night, a period when the sun does not rise above the horizon for several weeks or months, depending on the latitude. During this season, the Arctic is covered in thick sea ice and blankets of snow, rendering it impossible to explore.

Left to right: Fjords in Nuuk, Greenland; Glaciers and icicles in the Arctic







History books from the Explorers' Lounge



History

At Viking, we believe that history is not just a subject of the past, but a living tapestry woven into our present.

As you embark on your journey through these remarkable regions, you will discover that both hold tremendous historical significance as sites of daring exploration, trade routes, and wartime operations. These icy realms have witnessed the triumphs and challenges of intrepid explorers while contributing to scientific discoveries and serving as reminders of humanity's enduring quest for knowledge and conquest.

As The Thinking Person's Cruise Line we know we know you travel to explore learn and understand more about the world around us. Which is why 36 experts will accompany each voyage as part of the Viking Expedition Team, including an Expedition Leader and staff, photographer, field research scientists, general naturalists, mountain guides, kayak guides and specialists in ornithology, geology, higher predator biology and history.

Step onboard our ships and embark on a voyage that seamlessly blends the wonders of history with captivating experiences. We have revolutionised the way we delve into history with the magnificent Aula auditorium. The Aula showcases a sprawling 4K laser-projected panoramic screen that stretches across the room, transporting guests to pivotal historical moments in time. It serves as a platform for captivating lectures, enlightening daily briefings, insightful history and science presentations, and enthralling historical films, igniting a profound connection to the past.



Antarctica

Antarctica has always been a land of mystery and intrigue. For centuries after history's great explorers began charting the lands and seas of our planet, the great seventh continent was nothing more than an idea. As far back as the 2nd century, geographers and cartographers believed there was a vast land at the southern tip of the globe, but Antarctica – or 'Terra Australis Incognita' ('Unknown Southern Land'), as it was once known – remained elusive until the early 20th century.

British explorers Sir Ernest Shackleton and Robert Falcon Scott each made it their mission to be the first to reach the geographic South Pole, but Shackleton fell just 156 kilometres short of reaching the featureless landmark in 1907, and Scott was 33 days too late and would never make it back to England. Scott and his four companions all perished attempting to return to base camp, just 17 kilometres out of reach, and the ill-fated expedition is forever marked by one of the men, Lawrence Oates' immortal line: "I am just going outside and may be some time."

It was Norwegian explorer Roald Amundsen who ultimately raised the flag of Norway at the South Pole on 14 December 1911, leading the first team to the Earth's most southern point. This momentous occasion marked the start of in-depth exploration and research into the mysterious and wondrous Antarctica. It is because of the immense valour of explorers like Amundsen, Scott and Shackleton that travellers can experience the magic and majesty of Antarctica, over 100 years later.

Left from top: Ice grotto; British explorers

Right clockwise from top: Roald Amundsen setting Norwegian flag; Oscar Wisting with husky dog sled, Antarctica; Shackleton's crew at Patience Camp



Follow in the footsteps of explorers

As a Viking Expeditions guest in Antarctica, you'll witness the same ethereal sights and get a sense of what these brave men felt on witnessing Antarctica for the first time. The unfathomable expansiveness and magnificence of the natural surroundings lends itself to vivid moments of reflection and clarity – so don't be surprised if you often feel deeply moved by what you see. As you journey around the white continent, you'll find close bonds are easily forged with your fellow travellers as you share this once-in-a-lifetime experience that is almost indescribable.

Left to right: Snow trekking; Zodiac excursion; Photographing wildlife; Kayaking alongside icebergs



Learn from the experts

It is almost impossible not to be completely in the moment in this unspoilt land. Get up close to wildlife that has no reason to fear humans. Smell the crispness of the pure, pristine air. Feel the invigorating chill of sub-zero temperatures on your skin. Hear the distant sound of sea birds circling and calling in the sky. Every day brings with it new memories for you to take home and treasure, as you engage with the environment and fulfil your curiosity about this distant land.

When you're ready to take your journey further, our prestigious academics are on-hand to provide profound education into Antarctica's history, landscapes and wildlife. Thanks to our partnerships with some of the world's leading academic institutions, you'll have the opportunity to learn how glaciers flow, how plants thrive in such harsh conditions and why so many birds flock and live in a destination that has the harshest conditions on Earth. You can even actively participate in fieldwork, such as collecting samples and monitoring wildlife, and watch the discoveries unfold in our onboard working scientific laboratory.



The Arctic

The Arctic, located in the northernmost part of the Earth, has a rich and intriguing history. Consisting mainly of the Arctic Ocean, as well as portions of land belonging to Canada, Greenland, Russia, Norway, Sweden, Finland, Iceland and the USA. The North Pole is right at it's heart, permanently covered in sea ice and located 690km north of the northern tip of Greenland.

For centuries, an enduring fascination with the Arctic has driven explorers to the North Pole, with man attempting to take on nature and reach the top of the world, risking life and limb in doing so.

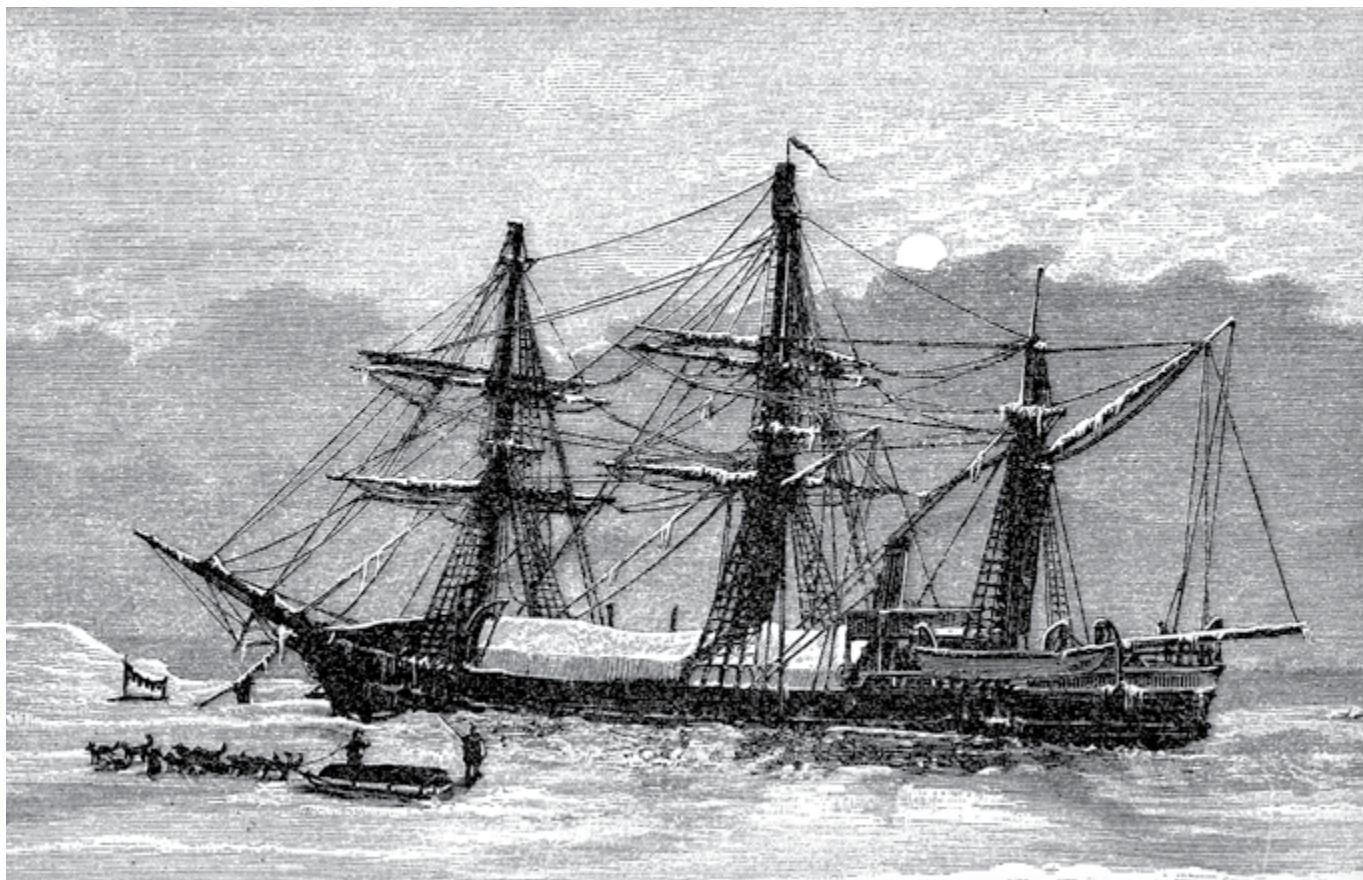
Historical records indicate that the exploration of the Arctic Ocean dates back as far as 325BC when the ancient Greek sailor Pytheas embarked on a voyage to discover the source of tin metal. Along his arduous journey, Pytheas encountered a frozen sea, which is believed to be the Arctic Ocean. This early discovery sparked a fascination with the polar regions, igniting the imaginations of subsequent generations of pioneers, adventurers, and explorers.

During the 19th and 20th centuries, European and American explorers embarked on daring expeditions, driven by a fervent desire to conquer the frozen tundra and unlock the secrets of the Arctic. Renowned explorers such as John Cabot, Henry Hudson, and James Cook ventured forth in search of the elusive Northwest Passage—a fabled waterway that would provide a direct route between the Atlantic and Pacific Oceans. These intrepid explorers braved treacherous conditions, charting new territories, and leaving a lasting imprint on Arctic exploration.

One of the most remarkable feats of polar exploration occurred in 1969 when Sir Walter William Herbert, a British polar explorer undertook a monumental 6,115 km crossing, becoming the first confirmed person to walk to the North Pole. This extraordinary achievement exemplified the audacity and perseverance exhibited by those who sought to conquer the Arctic's icy vastness.



Left from top: Arctic Circle map from the British Library; Young Roald Amundsen on skis
Right from top: Illustration of Swedish ship the SS Vega, attempting the Northeast Passage in 1872; Illustration of the sled team in the Arctic



Follow in the footsteps of explorers

Embark on an extraordinary Arctic adventure with Viking Expeditions, where you'll behold ethereal wonders and grasp the profound awe felt by the courageous explorers of old. The awe-inspiring natural landscapes and wildlife create moments of introspection and enlightenment, evoking profound emotions within you. As you traverse this remarkable continent, prepare to forge deep connections with fellow travellers, united by the once-in-a-lifetime journey. The Arctic's spellbinding allure will leave an everlasting imprint, allowing cherished bonds to form as you collectively embrace an experience that defies words. Get ready to be moved beyond measure.



Learn from the experts

At Viking, we go beyond ordinary travel in the Arctic, offering a transformative gateway to profound insights and remarkable discoveries. Our thoughtfully designed itineraries empower you to immerse yourself in the Arctic's culture. As you explore this majestic destination, our Viking Expedition Team will lead you in engaging endeavours, offering invaluable guidance and interpretation during shore excursions. Prepare for an extraordinary journey where exploration transcends boundaries, fostering a deeper understanding of the Arctic's wonders.

Left to right: Exploring icebergs in Disko Bay; Kayak excursions; Observing landscapes and wildlife









Viking Polaris in Antarctica



Our Voyages

We have envisioned expedition voyages for true explorers to facilitate exploration and scientific discovery. Our ships are purpose-built for expeditions to optimise exploring the remotest parts of the world in comfort. Featuring our signature serene Scandinavian design, they are small enough to navigate remote areas but large enough to provide speed, superior handling, and stability in rough seas. Our vessels merge comfort and exploration in an unprecedented way.

As 'The Thinking Person's Cruise Line', we design our itineraries so you can explore and engage with the nature, culture, science, and history of a destination. Not only do we support research efforts and new scientific discoveries, but we also encourage you to learn from and participate with scientists undertaking primary research, a unique Viking experience.

When you're not out discovering the landscapes and culture of your destination, there is plenty to keep you entertained onboard. Experience the ultimate healthy Nordic traditions and a covered outside badestamp in the state-of-the-art Nordic Spa, participate in citizen science activities alongside Vikings' scientists in The Science Laboratory or visit Expedition Central to learn more about your destination. Or curl up in the Living Room with a book from our onboard library, expertly curated by the prestigious London Bookshop Heywood Hill.

Join us for an unforgettable journey of a lifetime.

The Viking Difference

At Viking, we do not try to be all things to all people. Rather, our loyal guests continue to choose us every year because of our unique approach to cruising that is defined as much by the things we include as the things we leave out. Well travelled and culturally curious, we focus on delivering meaningful experiences tailored to you.

More inclusions

We don't underestimate the importance of good value, so we include more features and amenities in your cruise fare than most other cruise lines. All meals, wine and beer with lunch and dinner, one complimentary landing or shore excursion in every port of call, Wi-Fi, self-service laundries, gratuities and access to our state-of-the-art Nordic Spa are included in your Viking fare.

More comfort

Our purpose-built expedition ships are customised to navigate the planet's most remote environments while providing superior handling, comfort and stability even in the roughest seas. An integrated bow creates a longer waterline for the ships and state-of-the-art fin stabilisers allow the ship to glide over the waves for the calmest possible journey. Ice-strengthened Polar Class hulls provide the safest way to explore and U-tank stabilisers significantly decrease rolling by up to 50 percent. An industry first, our internal marina, The Hangar,

let's you board expedition Special Operations Boats from directly inside the ship, sheltered from wind and waves.

Faster ships

To reach Antarctica from Argentina, one must first sail the notoriously rough Drake Passage. The Viking expedition ships, each a Polar Class vessel with the latest stabilisation technology, are best equipped for making this journey. They are purpose-built to navigate the Drake Passage, which stretches nearly 1,000 kilometres between Cape Horn and Livingston Island in the South Shetland archipelago.

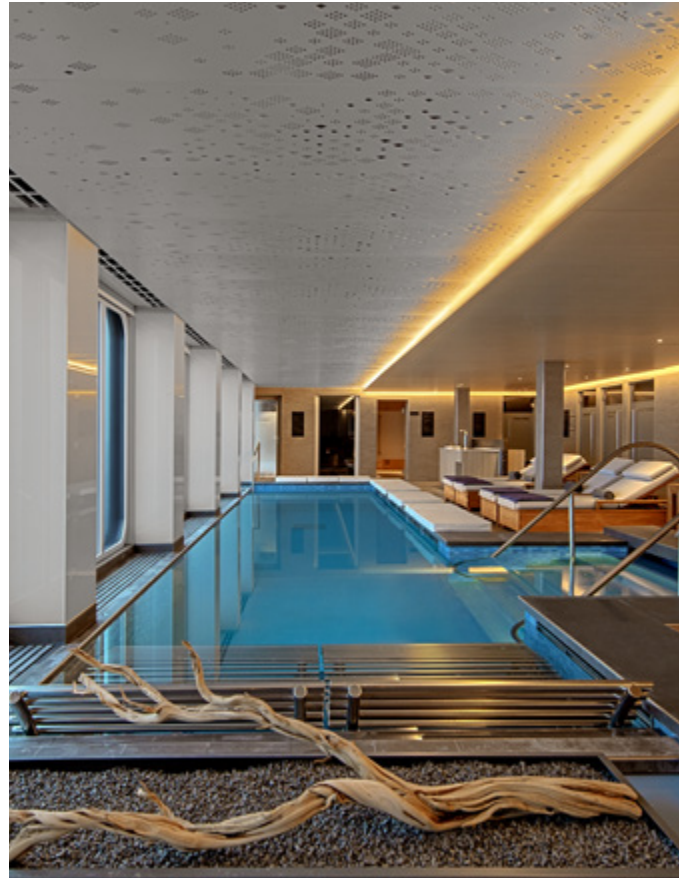
Expedition experts

Up to 36 experts will accompany each journey as part of the Viking Expedition Team, including an Expedition Leader and staff, photographer, field research scientists, general naturalists, mountain guides, kayak guides and specialists in ornithology, geology, higher predator biology and history.

Science at sea

Our ships have been designed as working research vessels. Not only do we have the most advanced venue for learning at sea and a fully equipped Science Laboratory, our excursions are accompanied by leading expedition experts and distinguished scientists, who encourage guests to participate in collaborative science activities and fieldwork, an experience exclusive to Viking. These scientific opportunities provide a level of onboard education and enrichment never before seen on a cruise ship.

Clockwise from top left: Aquavit Terrace; The Nordic Spa; Observation Deck Balloon Launch; Private Dining





Environmentally responsible

Our ships exceed the International Maritime Organization Energy Efficiency Design Index requirements by almost 36% and our dynamic positioning mode, enabling a “hover in place” preserves sensitive wildlife habitats on the sea floor. While our revolutionary incinerator process means we have zero emissions waste treatment.

Nordic Balconies

There are balconies, and then there is the Viking Nordic Balcony: harnessing the Norwegian reverence for light and creating the optimal wildlife observatory at sea. Floor-to-ceiling, distortion-free glass at the very edge of the ship lets you take the views in while keeping the elements out. To feel even closer to nature, the top of your panoramic glass lowers to transform your stateroom into a sheltered al fresco lookout, with an observation shelf at elbow level.

Attention to detail

Our aim has always been to create a comfortable environment on board our ships, so we have focused on making things as straightforward and as easy to operate as possible. Our TV remote controls have just a few, intuitive buttons. Our bathrooms have spacious showers, simple-to-use controls and our toiletries are clearly labelled and feature flip-top caps. Power outlets in staterooms are plentiful and conveniently located. In public spaces, you will find square-backed chairs that are easier for hanging jackets. We’ve thought of every detail, so you can focus on exploring and learning about the destination.



Left: Finse terrace

Right from top: Expedition Central bird display; Library

Viking Octantis & Viking Polaris

Optimally designed for expeditions—our identical sister ships are small enough to navigate remote polar regions and inland canals, while large enough to provide superior handling and stability in rough seas.

World Café

Offering a wide variety of international flavours in casually elegant surroundings, including seafood and sushi bar; grill and open galley as well as a 24-hour bakery and coffee station.

The Pools with Retractable Dome

Admire the scenery of vast wilderness — from polar ice fields to coniferous forests — from this heated sanctuary of three different temperature pools, including an “inside-out” pass-through swimming experience.

Aquavit Terrace

Enjoy al fresco dining or a drink while taking in the spectacular beauty that surrounds you.

The Aula

This Viking-exclusive auditorium boasts floor-to-ceiling windows for stunning 270° views.

Finse Terrace

An outdoor sanctuary — with comfortable seating and lava rock “firepits” — perfect for panoramic views of the natural surroundings.

The Hangar

A first among expedition ships, the protected in-ship marina launches Special Operations Boats, submarines, kayaks and Zodiacs.

The Science Laboratory

Complete with dry and wet capabilities, learn about and participate in research taking place in the onboard science centre.

Fitness Centre

Featuring cardio machines, an open space for yoga or Pilates and an onboard personal trainer.

The Nordic Spa

Experience the ultimate healthy Nordic traditions and a covered outside *badestamp*.

U-tank stabilizer

Reduces rolling by nearly 50% when the ships are stationary.

Manfredi's

From hearty Tuscan fare to Rome's renowned dishes, Manfredi's serves the finest Italian cuisine.

The Restaurant

Serving regional dishes, Scandinavian specialties and always-available classics.



GUESTS: 378 LENGTH: 665 FT. BEAM: 77 FT.

NOAA/National Weather Service

Weather balloon deployment station.

Mamsen's

Serving traditional Norwegian snacks and light fare, early morning to late night.

The Library

Specially curated by London bookshop Heywood Hill and Cambridge University (Scott Polar Research Institute).

The Living Room

Located to maximize views through the floor-to-ceiling windows, with a library that informs even the best-read explorers. The ideal setting for relaxation and conversations.

Explorers' Lounge

Located high on the ship with floor-to-ceiling windows.

The Shelter & The Bow

A prime outdoor viewing platform.

Forward Sonar

The standard navigation equipment is further enhanced by a forward sonar system, enabling us to detect underwater objects.

The Nordic Shop

For logo wear and a hand-picked selection of Scandinavian clothing and handicrafts.

State-of-the-art underwater stabilizers

Enjoy smooth sailing regardless of weather.

Staterooms

Choose from six categories of all outside, spacious rooms, featuring the innovative Nordic Balcony and — for the Suites — a private veranda and garden, all with king-size beds and large showers.

Promenade Deck

Stroll the entire ship on this deck, stretching your legs while keeping an eye out for wildlife in the air, sea or on land.



Science & Enrichment At Sea



Our ships have been designed as working research vessels and we have created the world's leading scientific enrichment environment in an expedition setting. Exclusive partnerships with the Scott Polar Research Institute at Cambridge University, The Cornell Lab of Ornithology and the National Oceanic and Atmospheric Administration (NOAA)—as well as other prestigious scientific institutions—will match leading researchers and educators with each expedition.

During each expedition, visiting researchers from partner institutions are part of the 36-person Viking Expedition Team. This diverse group of experts lead guests through meaningful scientific work, guiding and interpreting during shore excursions or within The Science Laboratory.

Science on board and on shore

On board, guests will enjoy daily briefings and world-class lectures about their destination – and engage with



working scientists from renowned academic institutions in The Science Laboratory or participate directly in citizen science programs.

On shore, guests can assist in fieldwork or interact through experiential activities during landings – such as monitoring birds to help identify migratory patterns, or accompanying scientists to collect samples.

Citizen science

Citizen science is a collaboration between scientists and the general public to collect data, conduct scientific research and analyse the findings with the goal of allowing everyday people to contribute to the scientific community and learn more about unique environments and the challenges they face.

When we created The Thinking Person's Expedition our intention was that every expedition would provide opportunities for discovery. During each voyage, guests



can participate in real, significant science that contributes to research and ultimately to the publication of scientific papers. Our scientific approach centres on having the platform to explore with the personnel to interpret what is found. By taking part in Viking's Citizen Science Program you can gain a deeper understanding of the natural world and the importance of protecting fragile environments like Antarctica.

Viking hosts a NASA-funded program of Scripps Institution of Oceanography, allowing guests to engage in research and public education through novel citizen science sampling of polar phytoplankton for genetic population analyses.

Viking Octantis and *Viking Polaris* have also been designated National Oceanic and Atmospheric Administration (NOAA) weather stations, from which we launch weather balloons.

As a citizen scientist you could participate in activities such as the Happy Whale program which identifies and tracks individual whale movements, or the FjordPhyto plankton research program which investigates how melting glaciers are affecting phytoplankton diversity.

Left to right: Flora research, The Science Laboratory; The Aula

Antarctica Itineraries



Antarctic Explorer

BUENOS AIRES – USHUAIA – BUENOS AIRES

13 DAYS ✦ 2 COUNTRIES

Discover the “Last Continent”

This ultimate adventure takes you to the Antarctic peninsula, where you will witness towering glaciers, snow-covered landscapes, immense icebergs and once-in-a-lifetime wildlife viewing. In the footsteps of explorers such as Amundsen, Shackleton and Scott, you will be one of the few to discover the world’s last truly wild frontier. Each day brings new surprises and the opportunity to change plans to maximise wildlife sightings.



Antarctic & South Georgia Island

BUENOS AIRES – USHUAIA

19 DAYS ✦ 3 COUNTRIES

Explore uncharted territory

Set sail from Ushuaia to the Falkland Islands, renowned for their spectacular landscapes with rugged coves and white-sand beaches. Call at South Georgia, one of the least visited places on Earth, and witness towering glaciers and magnificent icebergs of the “Last Continent.” Explore the untamed beauty of Antarctica on board Viking’s state-of-the-art expedition vessel and experience a journey like no other to one of the world’s last unexplored.



The Americas & Antarctic Explorer

FORT LAUDERDALE – USHUAIA – BUENOS AIRES

42 DAYS ✦ 8 COUNTRIES

Ancient lands to icy peninsulas

Set sail on a journey to discover the secrets of Central America’s ancient cultures. Immerse yourself in the Yucatán Peninsula’s natural beauty and explore Chile and its majestic fjords. Enjoy the exclusive use of your ship’s expedition equipment as you experience up-close wildlife encounters. Revel in the opportunity to participate in valuable scientific studies while admiring the striking landscape of Antarctica as you uncover a world of wonder.

Explore More – Pre & Post Extensions

Extend your journey before or after your Viking cruise with our extension packages — designed to help you explore more of your embarkation or disembarkation point, or discover a new destination altogether. To determine which packages are available with your cruise, check the relevant itinerary or visit viking.com/expeditions



4 Nights Easter Island

Immerse yourself in the local traditions and folklore of the Rapa Nui people of Easter Island. Learn about the significance of the monolithic moais, enigmatic stone sculptures that dot this Polynesian island. Discover the rich heritage of the islanders, whose ancestors have resided here for generations.

- 4 nights accommodation
- 4 breakfasts, 4 lunches & 2 dinners
- 3 guided tours
- Fully escorted by your Viking Tour Director
- Flight from Santiago to Buenos Aires
- All transfers



5 Nights Gateway To Patagonia

Explore both the Chilean and Argentine sides of Patagonia, a region of unparalleled beauty. Admire the rugged peaks of Torres del Paine National Park, the blue waters of Lake Argentino, the views from atop Calafate Balcony and the world's only advancing glacier, Perito Moreno.

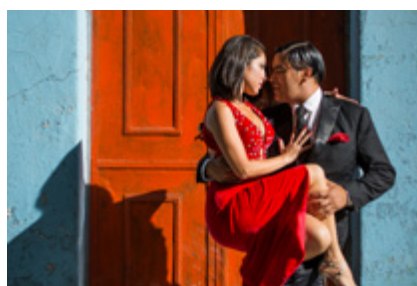
- 5 nights accommodation
- 5 breakfasts, 5 lunches & 3 dinners
- 3 guided tours
- Services of a Viking Tour Director
- Flight between Buenos Aires to El Calafate and Punta Arenas to Santiago
- All transfers



5 Nights Atacama Desert

Explore the Atacama Desert, one of the most intriguing landscapes on the planet. Venture into the driest place on Earth to admire the salt plains and bizarre rock formations set against a backdrop of giant volcanoes. Then, gaze at the stars and planets that shine in the crystal-clear desert skies.

- 5 nights accommodation
- 5 breakfasts, 5 lunches & 3 dinners
- 6 guided tours
- Services of a Viking Tour Director
- Return flight from Santiago to Calama; flight from Santiago to Buenos Aires
- All transfers



3 Nights Buenos Aires & Parana Delta

Uncover two sides to Argentina during your 3-night stay in Buenos Aires and Tigre. Discover Argentina's vibrant culture at a historic café and enjoy a thrilling evening tango performance. Travel deep into the heart of the Paraná Delta and explore its enchanting waterways, islands and wetlands.

- 3 nights accommodation
- 3 breakfasts, 2 lunches & 2 dinners
- 2 guided tours
- Fully escorted by your Viking Tour Director
- All transfers



4 Nights Iguazú Falls

Explore the Atlantic Forest and witness the majestic Iguazú Falls up close. With an expert guide, immerse yourself in nature as you discover the myths and legends of the falls. Admire vibrant and cosmopolitan Buenos Aires, home of the tango, and enjoy an enchanting performance.

- 4 nights accommodation
- 4 breakfasts, 2 lunches & 4 dinners
- 6 guided tours
- Fully escorted by your Viking Tour Director
- Roundtrip flight from Buenos Aires to Iguazú Falls
- All transfers

The Arctic Itineraries



Into the Northwest Passage

NUUK – NUUK

13 DAYS ✶ 2 COUNTRIES

Majestic scenery of the Arctic

Discover the rugged landscapes and awe-inspiring nature of the Arctic Circle. Immerse yourself in Inuit customs and traditions while exploring towns dotted with colorful wooden houses. Witness the towering peaks of Greenland and glaciers of the Canadian High Arctic, as you kayak pristine fjords, or partake in a thrilling Zodiac landing. Join Viking on a once-in-life-time voyage to remote territories beneath the the midnight sun.



Canada & Greenland Explorer

TORONTO – NUUK *or vice versa*

15 DAYS ✶ 2 COUNTRIES

Remote outposts and Inuit lands

Explore Canada and Greenland's rugged shores on an awe-inspiring journey through one of the most fascinating corners of the world. Sail amid floating icebergs as they drift in blue-tinged waters and witness the wonders of Mother Nature as you immerse yourself in dramatic landscapes. Learn about the Inuit traditions that still thrive in remote communities and experience the stark beauty of the Arctic beneath the skies of the midnight sun.



Canada & the Northwest Passage

NUUK – TORONTO *or vice versa*

27 DAYS ✶ 2 COUNTRIES

Spectacular scenery of land and sea

Witness the majesty of floating icebergs and rugged lands as you embark on a journey to the Canadian High Arctic and Greenland. View towering icebergs, expansive icefields and deep-blue fjords that are rich in marine life. Get a glimpse of life in Inuit communities and learn about traditions that have sustained for generations. Bask beneath the skies of the endless midnight sun as you join us on a voyage of discovery to far-flung lands.

Explore More – Pre & Post Extensions

Extend your journey before or after your Viking cruise with our extension packages — designed to help you explore more of your embarkation or disembarkation point, or discover a new destination altogether. To determine which packages are available with your cruise, check the relevant itinerary or visit viking.com/expeditions



2 Nights Toronto

Explore cosmopolitan Toronto, one of Canada's most diverse and exciting cities. Embark on a panoramic journey through the capital of Ontario, passing iconic landmarks and trendy, culture-rich neighborhoods, and discovering Canada's renowned Group of Seven painters at the distinguished Art Gallery of Ontario.

- 2 nights accommodation
- 2 breakfasts
- 2 guided tours
- Services of a Viking Host
- All transfers



3 Nights Georgian Bay

Immerse yourself in the striking beauty of Georgian Bay during your stay at a remote wilderness lodge nestled in the heart of Ontario's rugged landscape. Revel in the tranquility of nature, admiring picturesque views of the bay and explore more during a scenic cruise and morning kayak journey.

- 3 nights accommodation
- 3 breakfasts, 3 lunches & 2 dinners
- 4 guided tours
- Services of a Viking Host
- All transfers

Order Your
Complimentary Viking
Expeditions Brochure





NO KIDS | NO CASINOS | VOTED WORLD'S BEST
TO BOOK CONTACT YOUR PREFERRED TRAVEL AGENT

EXPLORE THE WORLD VIRTUALLY WITH VIKING.TV